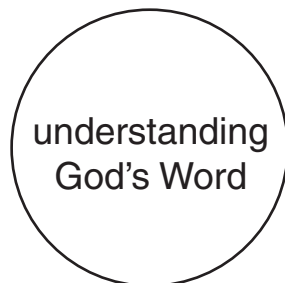
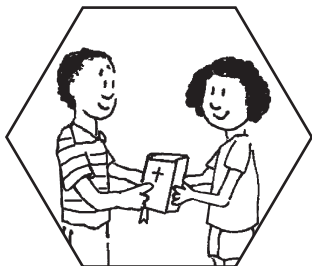
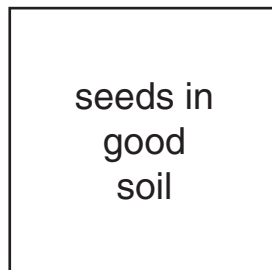
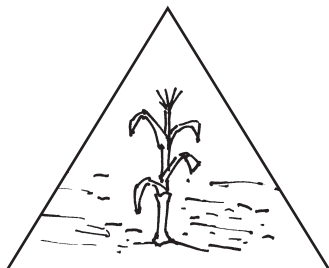
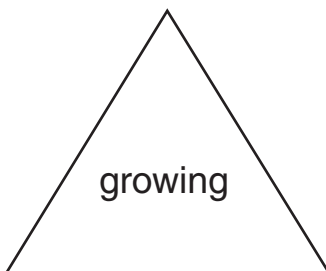
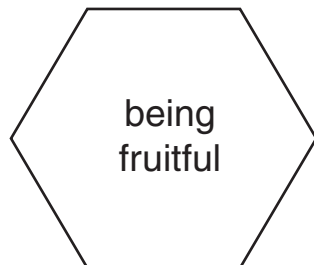
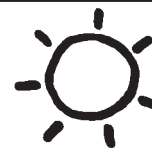


Some seed fell on good soil. It grew well. That's like people who hear God's Word and obey.

Match the shapes.



# Children's Worship Bulletin™



Ages 3+

July 12, 2020 • Matthew 13:1-9, 18-23

## The Parable of the Sower

Jesus told a parable. The people listened.

Circle the people's ears and count how many.  
Trace the correct number.



Find part of the parable.


Use the picture code to fill in the blanks.



“ ... the  \_\_\_\_\_

on  \_\_\_\_\_

ground is like

 \_\_\_\_\_

who hear with  \_\_\_\_\_

but have no

 \_\_\_\_\_ ”

Some seed fell among thorns.  
It started to grow, but weeds choked it.

Circle the picture that is different.

